

INSTALLATION INSTRUCTIONS

LPI Mechanical Earthing Connections

- UBRC35120
- UBRCT35120
- REBC70
- REBC100

Guideline for installation of LPI mechanical earthing connections.

INSTALLATION INSTRUCTIONS

Standard Requirements

- It is recommended all clamps and connections have paste and tape wrap applied before burial of connections
- All flat and/or spring washers supplied with clamps must be used

INSTALLATION INSTRUCTIONS

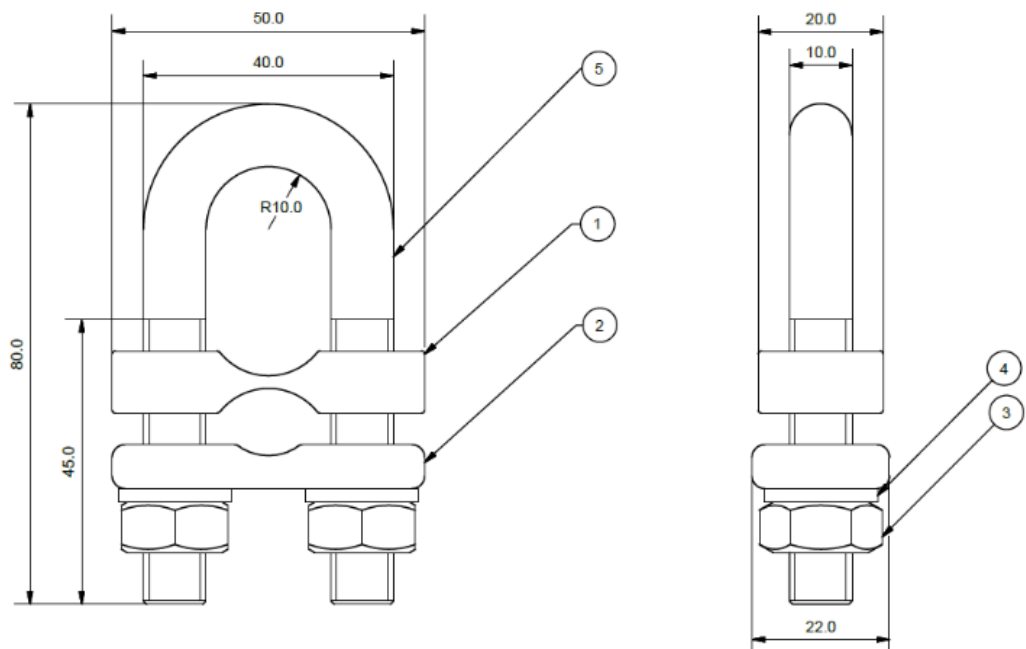
LPI Clamping Products

LPI UBRC35120

- For earth rod 12 x 17 mm, vertical conductor 35/120 mm² cable



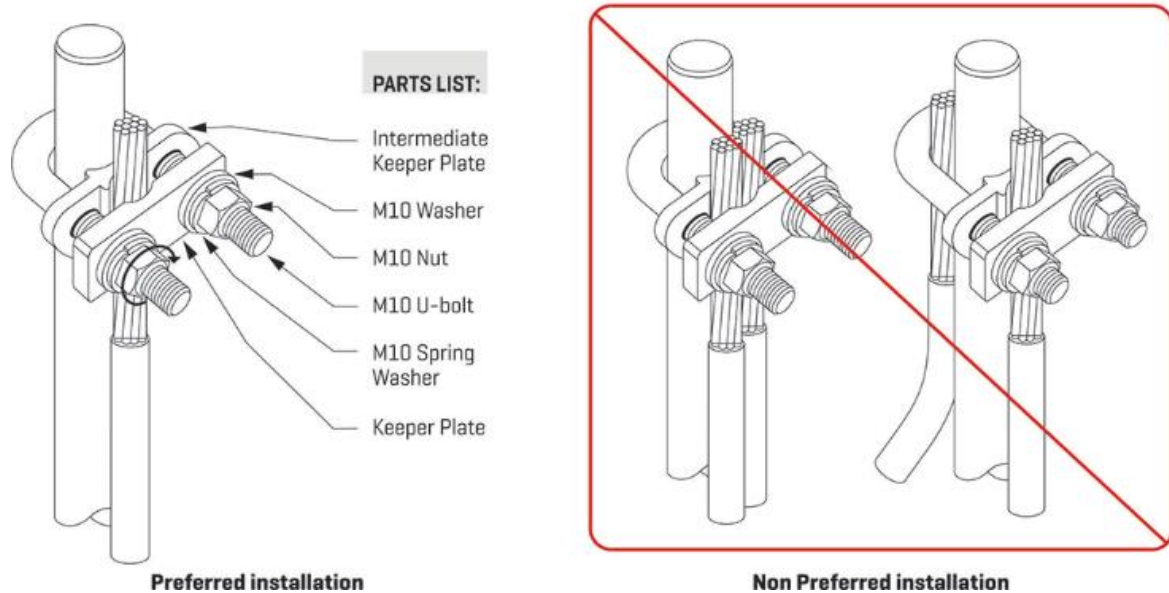
ITEM	QTY	DESCRIPTION	MATERIAL
1	1	EARTH ROD KEEPER PLATE	C110 COPPER
2	1	CABLE KEEPER PLATE	C110 COPPER
3	2	HEX NUT, M10 x 1.5	316 STAINLESS STEEL
4	2	M10 WASHER + SPRING WASHER	316 STAINLESS STEEL
5	1	U-BOLT	316 STAINLESS STEEL



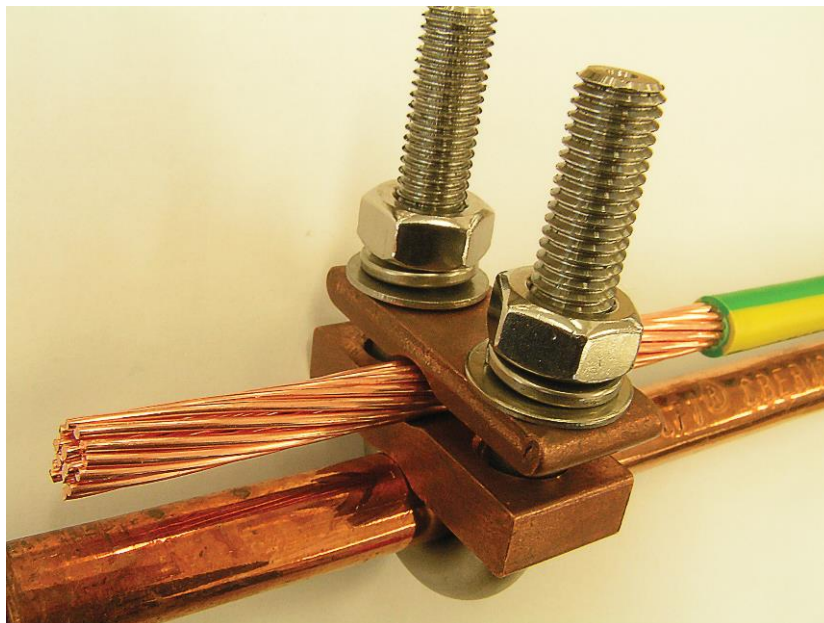
INSTALLATION INSTRUCTIONS

UBRC35120 Configurations

UBRC35120 for Rod to 35-120 mm² cable only

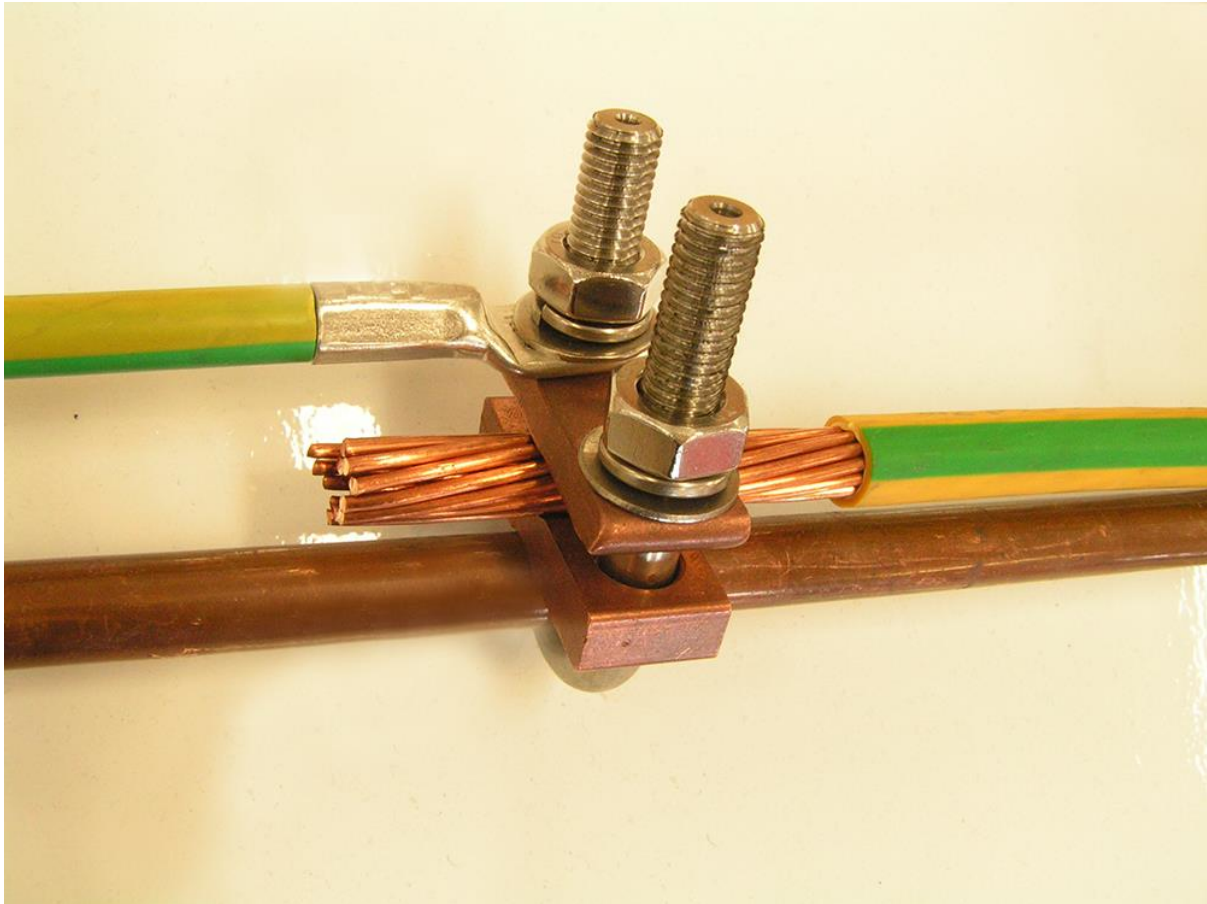


- Single bare vertical 35/120 mm between compression plates
- Single earth rod 12-17 mm between u-bolt and compression plate



INSTALLATION INSTRUCTIONS

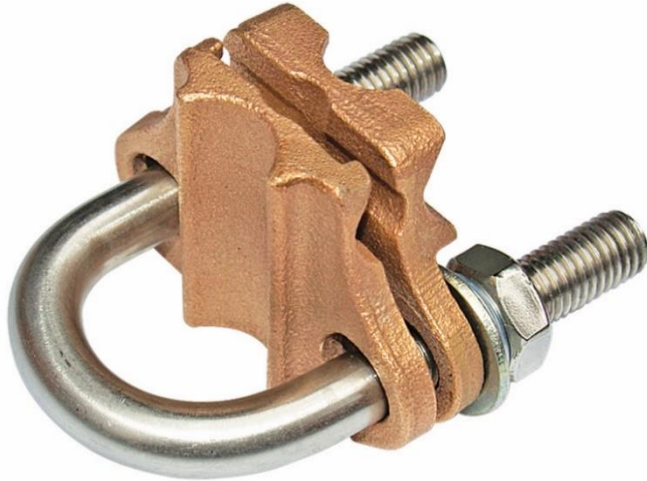
- Single bare vertical 35/120 mm between compression plates
- Single earth rod 12-17 mm between u-bolt and compression plate
- Lugged cable fixed to M10-bolt and nut



INSTALLATION INSTRUCTIONS

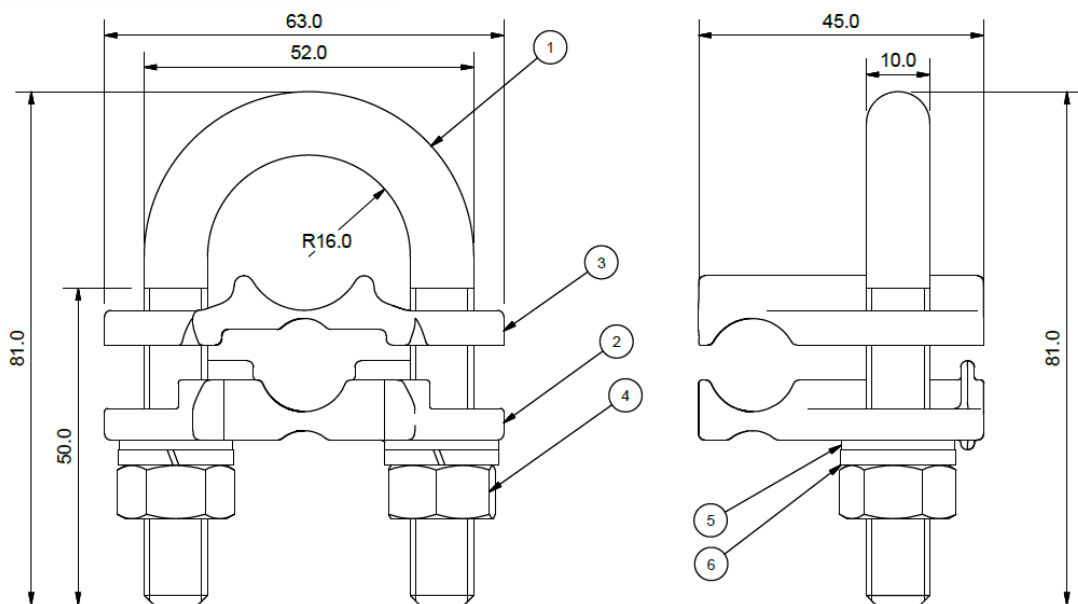
LPI Clamping Products

LPI UBRCT35120



- For earth rod 12 x 17mm to horizontal and vertical 70–120 mm² bare cable connections

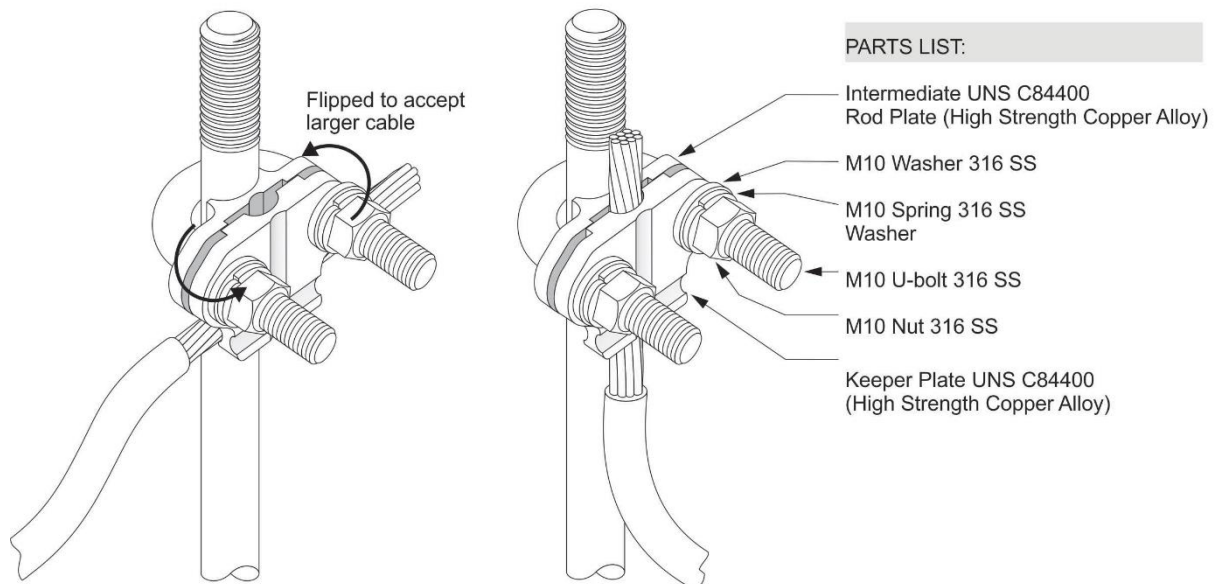
PARTS LIST			
ITEM	QTY	DESCRIPTION	MATERIAL
1	1	U-BOLT	316 STAINLESS STEEL
2	1	CABLE KEEPER PLATE	C110 COPPER
3	1	ROD KEEPER PLATE	C110 COPPER
4	2	HEX NUT, M10 x 1.5	316 STAINLESS STEEL
5	2	M10 FLAT WASHER	316 STAINLESS STEEL
6	2	M10 SPRING WASHER	316 STAINLESS STEEL



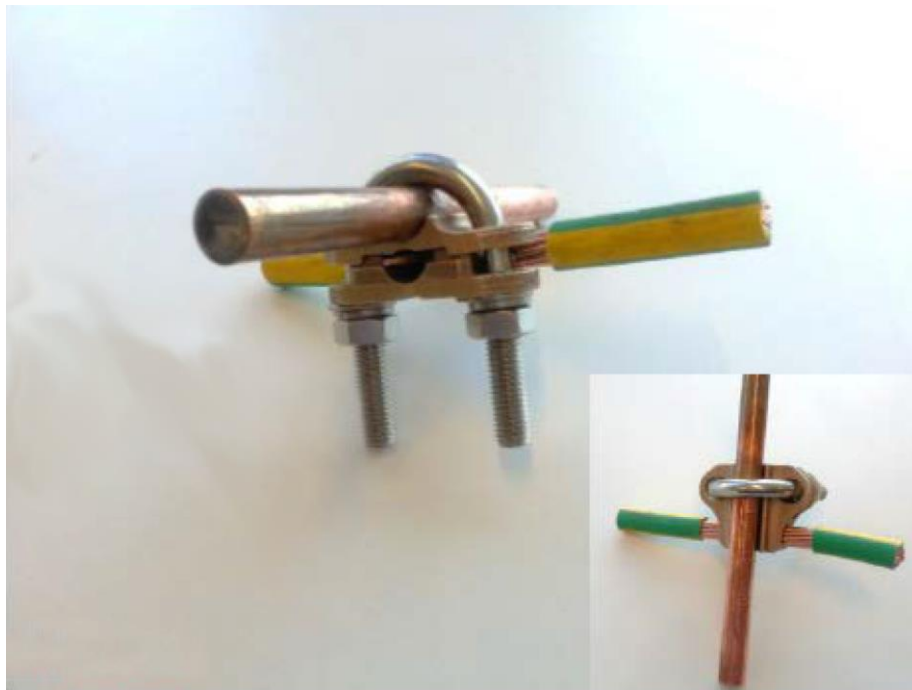
INSTALLATION INSTRUCTIONS

UBRCT35120 Configurations

Keeper Plate set for 70-120 mm cable

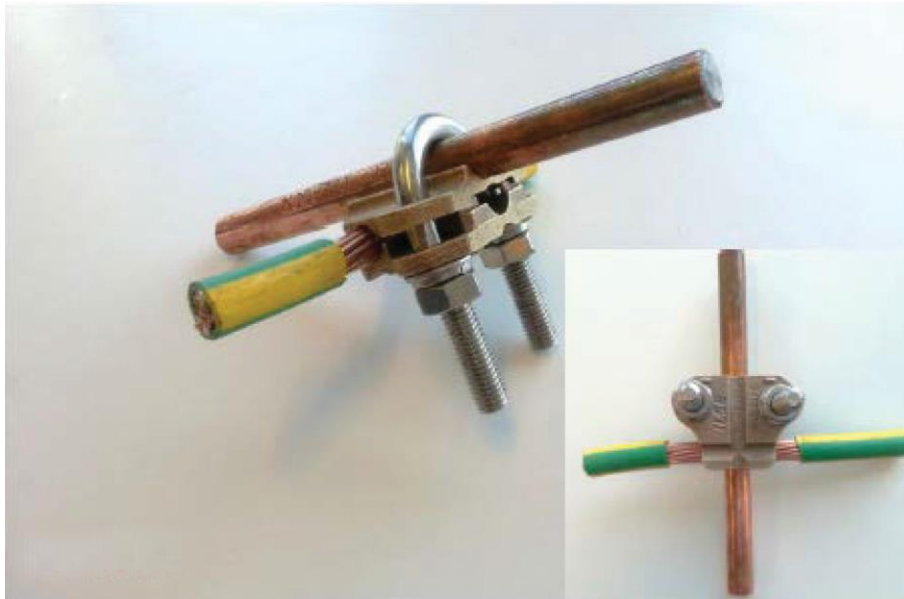


- Single bare horizontal 70-120 mm² between compression plates
- Single earth rod between u-bolt and compression plate



INSTALLATION INSTRUCTIONS

- Single horizontal 70 mm² earthing ring cable connection to each electrode clamp
- Additional vertical 70 mm² can be connected between plates
- Compression plates to be installed noting required face direction

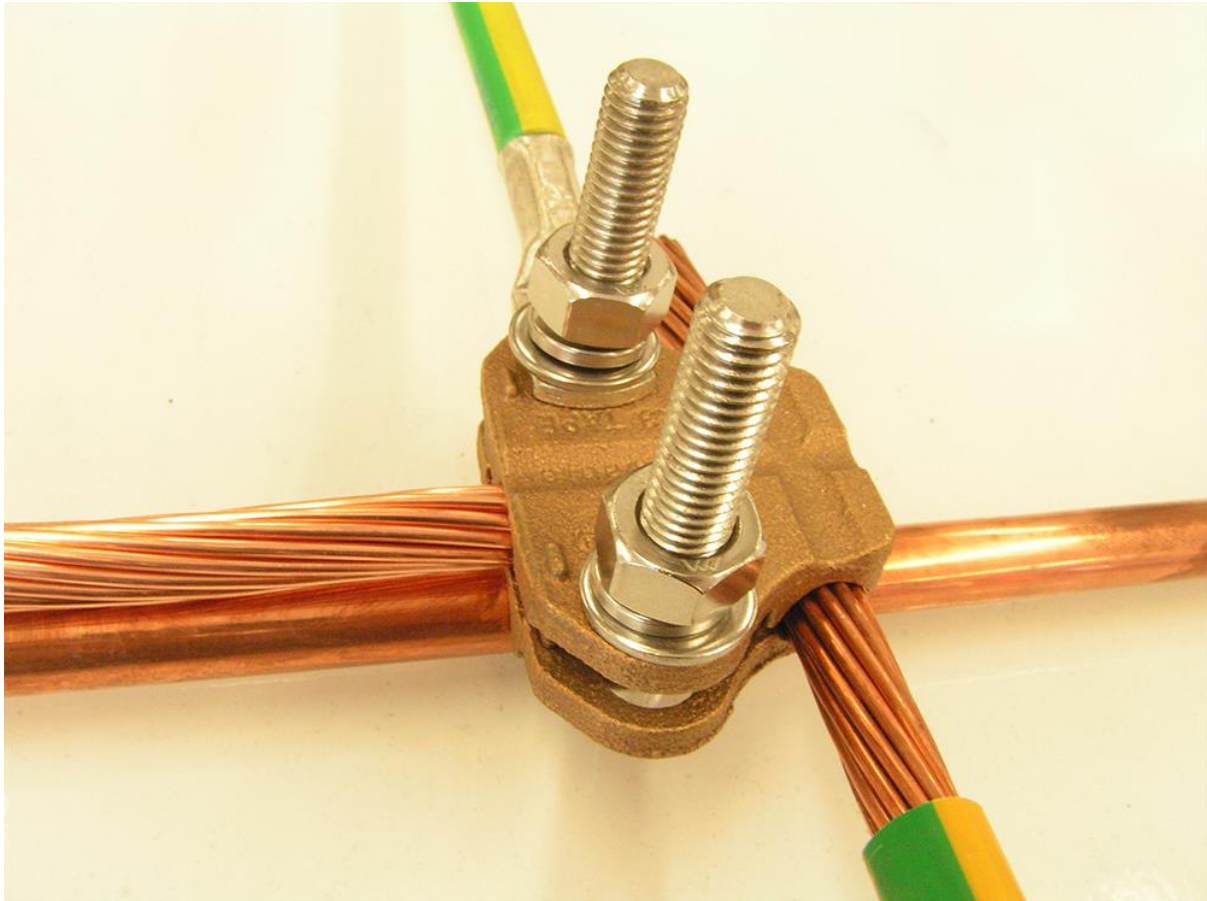


- Vertical and horizontal cable must be the same diameter



INSTALLATION INSTRUCTIONS

- Single earth rod between u-bolt and compression plate
- Vertical and horizontal cables between compression plates
- Lugged cable fixed to M10 bolt and nut



INSTALLATION INSTRUCTIONS

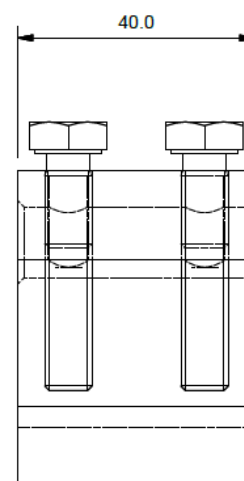
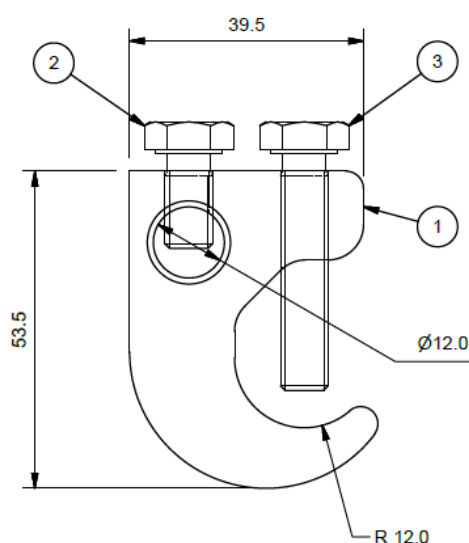
LPI Clamping Products

LPI REBC70



- For 35/70 mm² cable and rebar connections

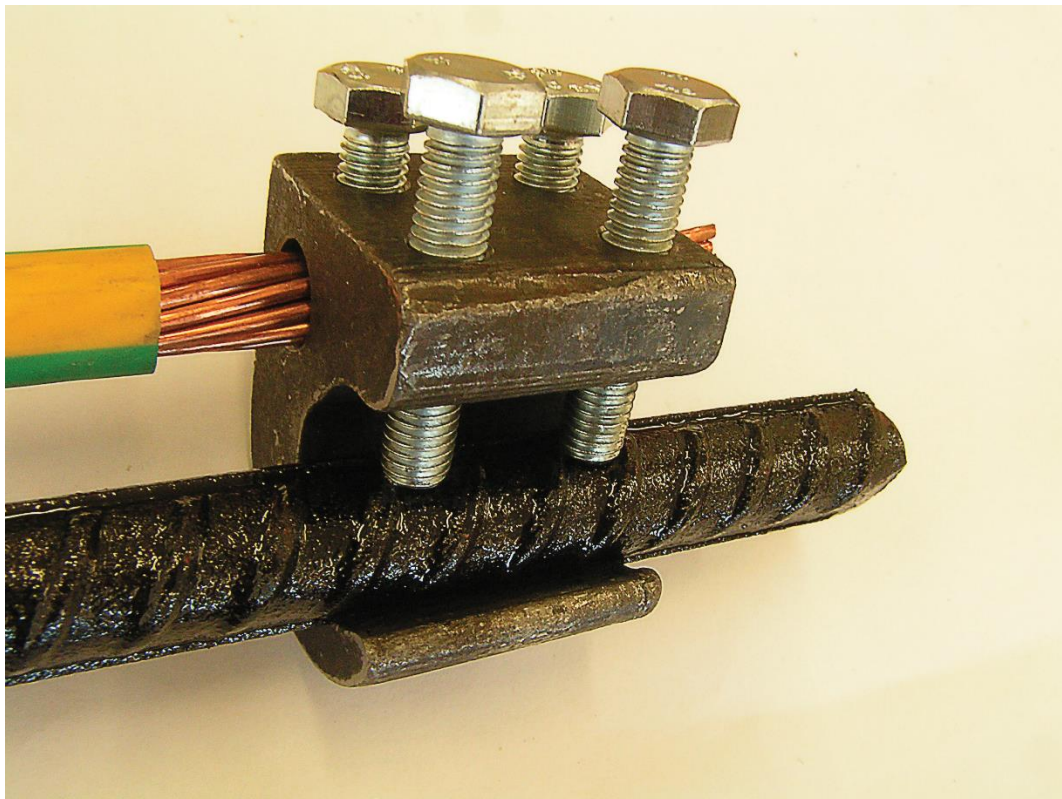
ITEM	QTY	DESCRIPTION	MATERIAL
1	1	CLAMP	MILD STEEL
2	2	SET SCREW	HEX HD, ZP, M8 x 16
3	2	SET SCREW	HEX HD, ZP, M8 x 40



INSTALLATION INSTRUCTIONS

LPI REBC70 Configurations**Copper cable to rebar connection**

- Use to connect 35 mm² or 70 mm² copper cable to a rebar of 8 mm to 18 mm in diameter
- Connect as per the photograph
- All connections to utilise approved bonding paste between mating surfaces
- Wrap connection in Denso™ tape over both the exposed cable and the rebar



INSTALLATION INSTRUCTIONS

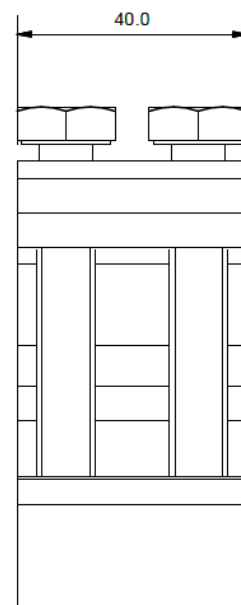
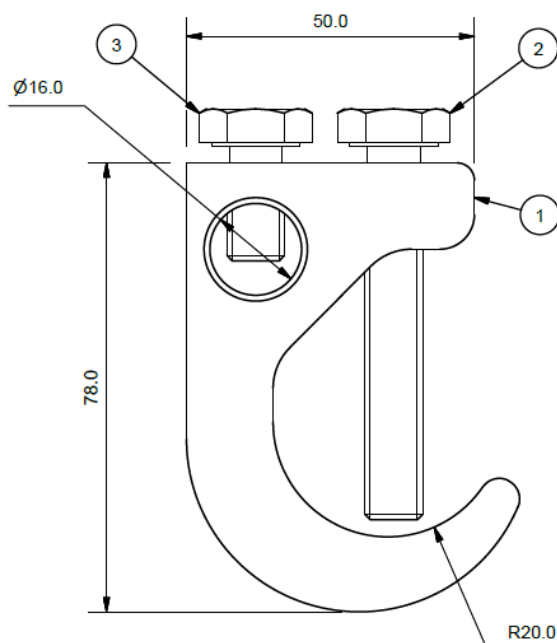
LPI Clamping Products

LPI REBC100

- For 120 mm² cable and rebar connections



ITEM	QTY	DESCRIPTION	MATERIAL
1	1	CLAMP	MILD STEEL
2	2	SET SCREW	HEX HD, ZP, M10 x 65
3	2	SET SCREW	HEX HD, ZP, M10 x 20



INSTALLATION INSTRUCTIONS

LPI REBC100 Configurations**Copper cable to rebar connection**

- Use to connect up to 120 mm² copper cable to a rebar of 18 mm to 36 mm in diameter
- Connect as per the photograph
- All connections to utilise approved bonding paste between mating surfaces
- Wrap connection in Denso™ tape over both the exposed cable and the rebar

